

CASE STUDY PREFECTURE OF ATHENS- DEPARTMENT OF SOCIAL PROVIDENCE

**SURFACE TEMPERATURE MEASUREMENT OF A ROOF- BASED ON
CORRODED WHITE CONCRETE TILES BEFORE AND AFTER THE
APPLICATION OF COOL BARRIER ROOF BY ABOLIN CO.**



ABOLIN Co.
www.abolincoolpaints.com





PREFECTURE OF ATHENS- DEPARTMENT OF SOCIAL PROVIDENCE
CASE STUDY PRODUCT: ABOLIN COOL BARRIER ROOF



**PREFECTURE OF ATHENS- DEPARTMENT OF SOCIAL PROVIDENCE
ROOF BASED ON CORRODED CONCRETE ROOF TILES APP. 600 m²**

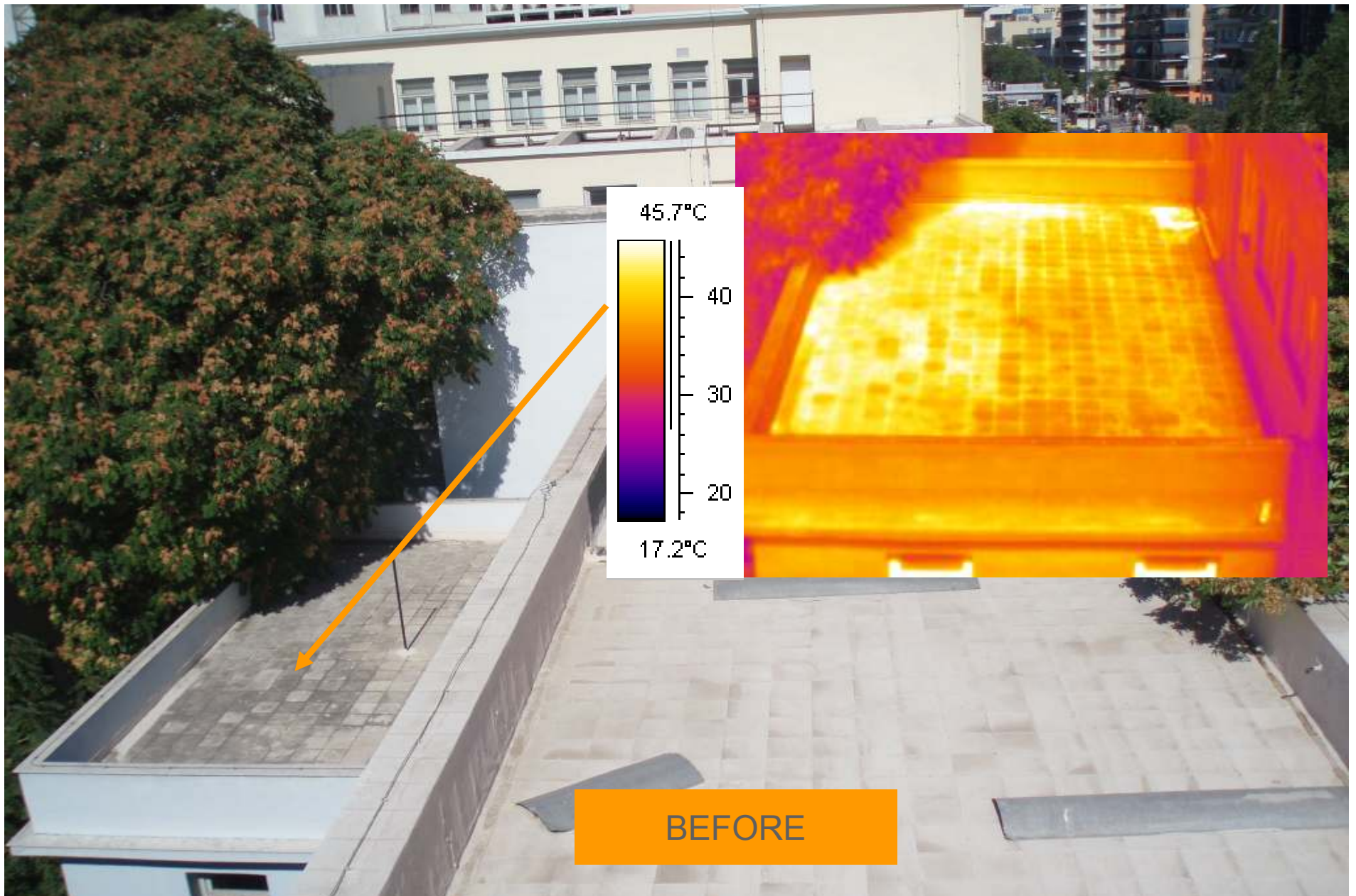


Meteorological Data National Observatory of Athens

Temperature (C)	31,5
Relative humidity (%)	30%
Wind speed (m/s)	9,6
Wind direction	NE
Solar radiation total (Watt/m2)	866
Solar radiation diffuse (Watt/m2)	88

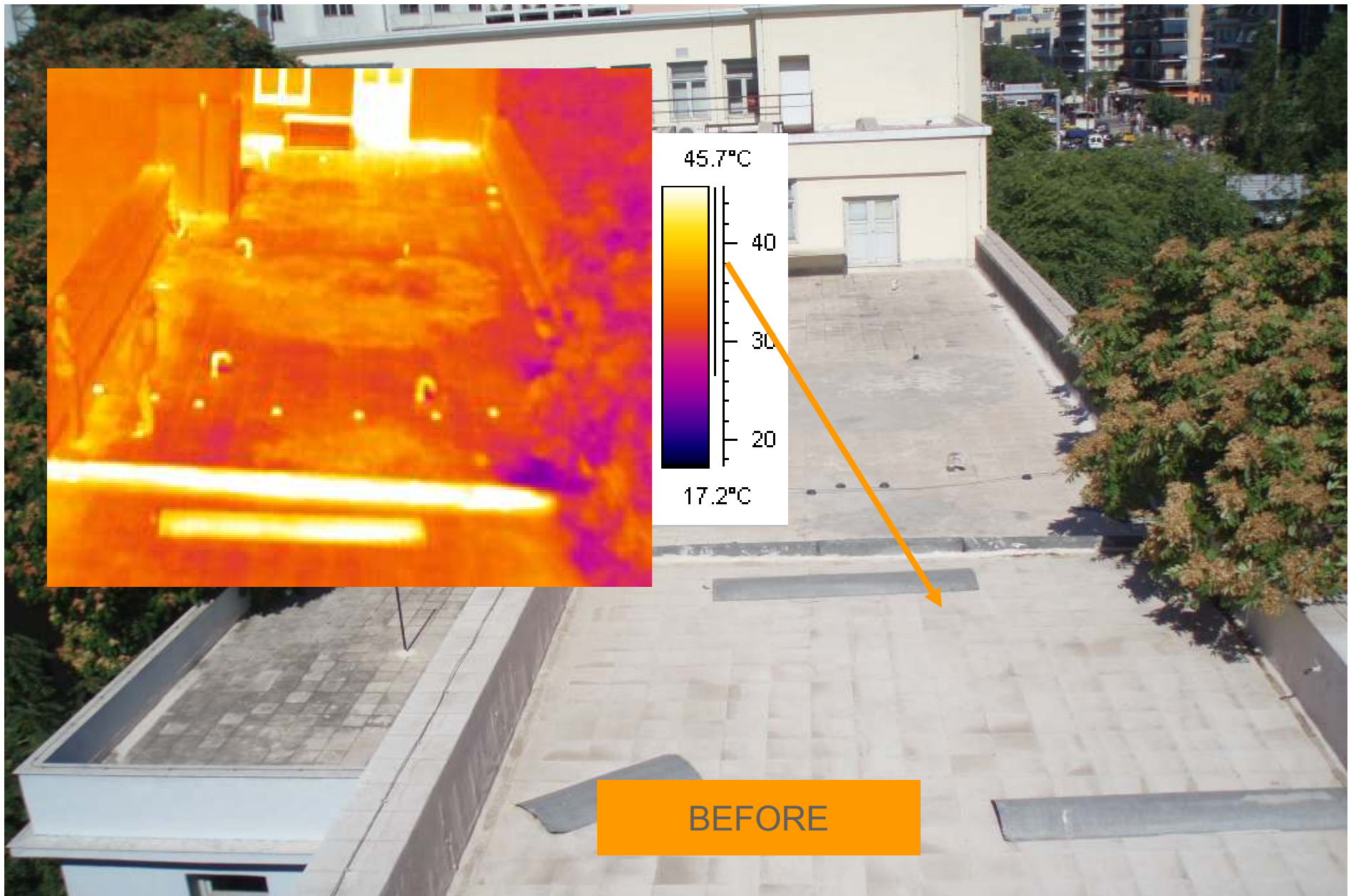
BEFORE

Date 30-7-2008 10:00 am



Thermal depiction with the use of an Infrared Camera

Date 30-7-2008 10:00



Thermal depiction with the use of an Infrared Camera

Date 30-7-2008 10:00



Meteorological Data National Observatory of Athens

Temperature (C)	37
Relative humidity (%)	28%
Wind speed (m/s)	6,4
Wind direction	NNE



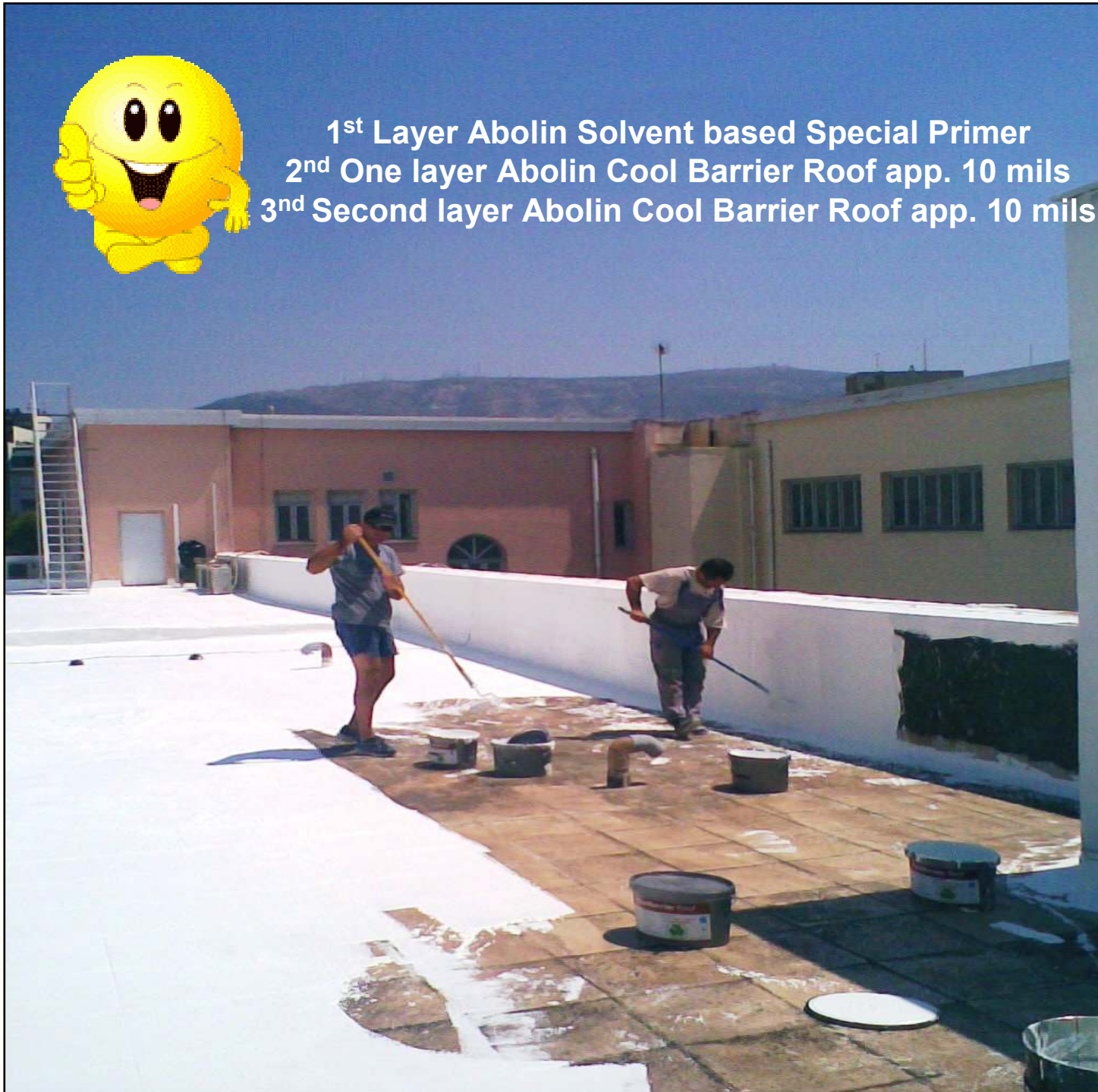
CONCRETE
PAVEMENT TILES

BEFORE

Surface temperature measurement with the use of an infrared laser thermometer 6-8-2008 14:00



- 1st Layer Abolin Solvent based Special Primer
- 2nd One layer Abolin Cool Barrier Roof app. 10 mils
- 3rd Second layer Abolin Cool Barrier Roof app. 10 mils





AFTER

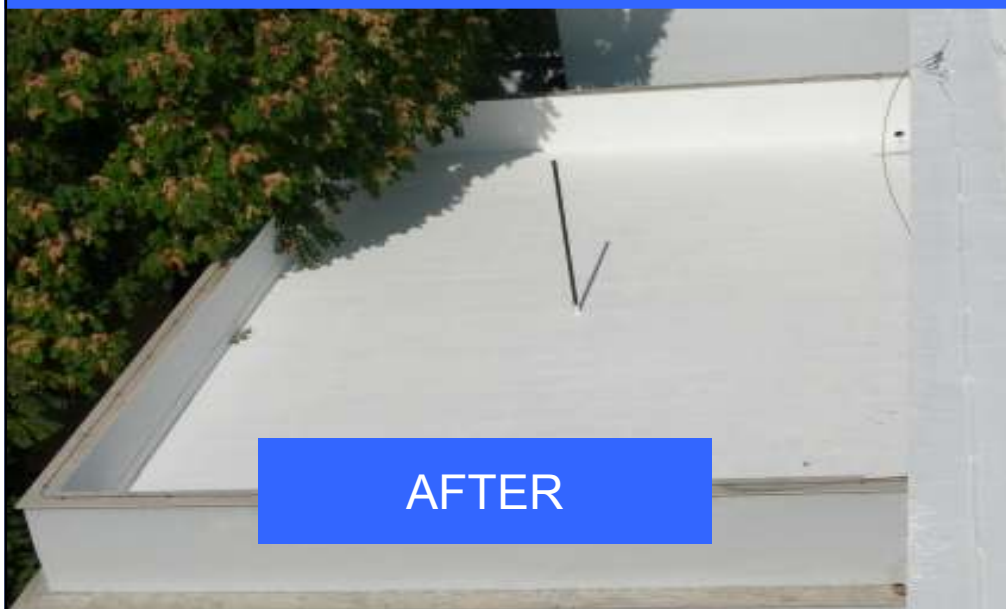


ABOLIN COOL BARRIER ROOF



ABOLIN COOL BARRIER ROOF

Date 8-8-2008 10:00 am



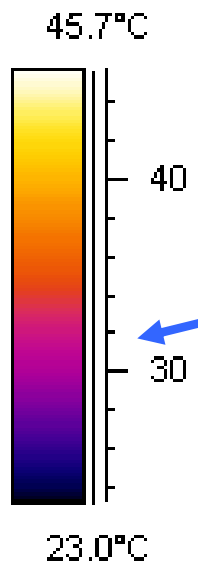
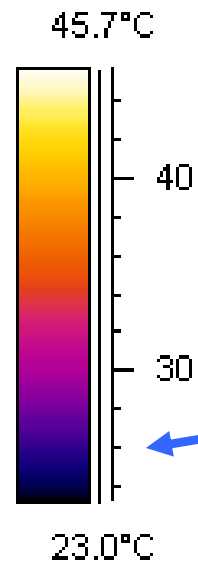
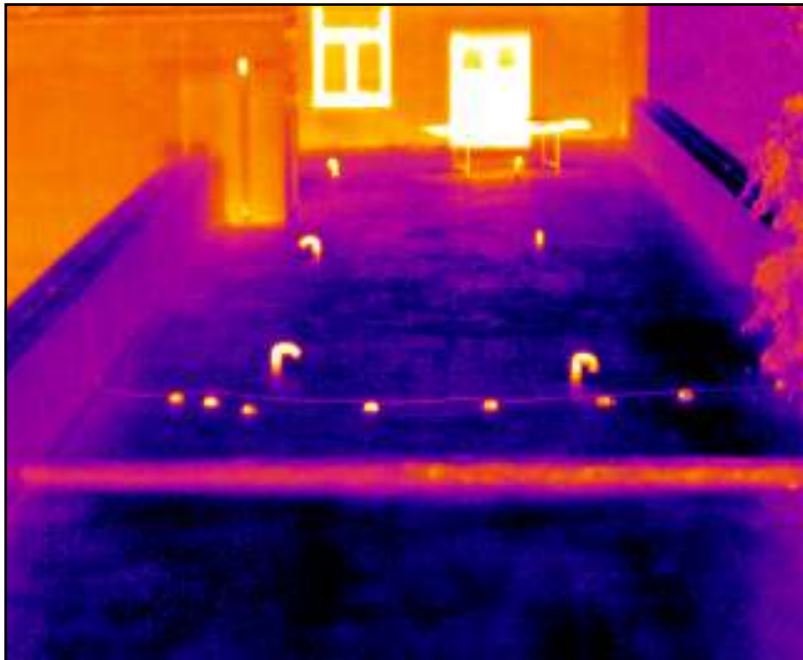
Meteorological Data National Observatory of Athens

Temperature (C)	30
Relative humidity (%)	33%
Wind speed (m/s)	12,5
Wind direction	N



Thermal depiction with the use of an Infrared Camera

Date 08-8-2008 10:00



roof-radiation

Date 30-7-2008 10:00



BEFORE

BEFORE

Date 08-8-2008 10:00



AFTER

AFTER



Temperature (C)	30
Relative humidity (%)	33%
Wind speed (m/s)	12,5
Wind direction	N



AFTER

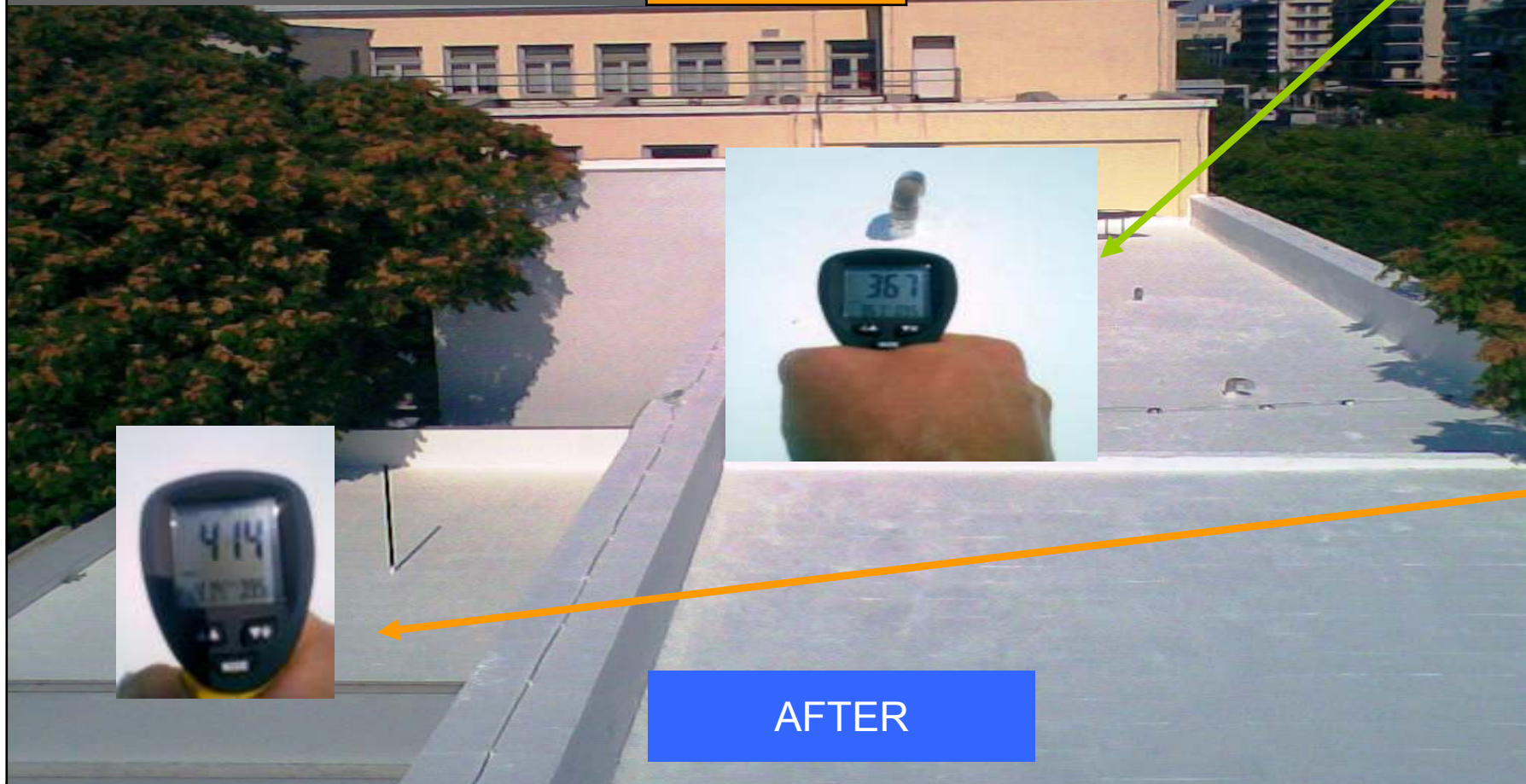
COOL Barrier FOR

Surface temperature measurement with the use of an infrared laser thermometer 8-8-2008 10:00



Meteorological Data National Observatory of Athens

Temperature (C)	34
Relative humidity (%)	30%
Wind speed (m/s)	14,5
Wind direction	NNE

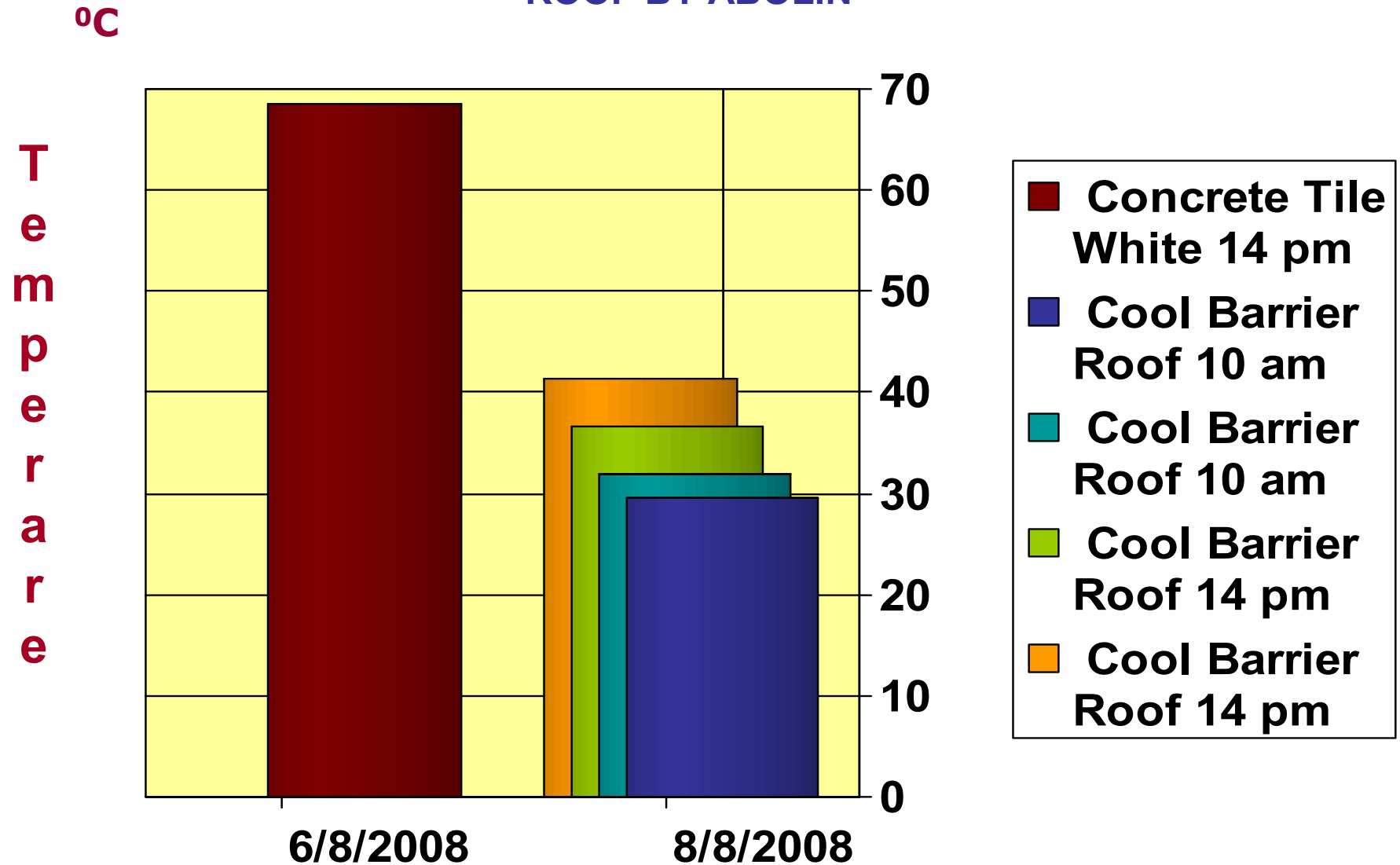


AFTER

Too-r-r-a-B-LooC

Surface temperature measurement with the use of an infrared laser thermometer 8-8-2008 14:00

**TEMPERATURE MEASUREMENTS WITH THE USE OF AN INFRARED LASER
THERMOMETER BEFORE AND AFTER THE APPLICATION OF COOL BARRIER
ROOF BY ABOLIN**



We can make the World Cooler



Abolin CoolBarrier Technology
www.abolincoolpaints.com